

1

2

3

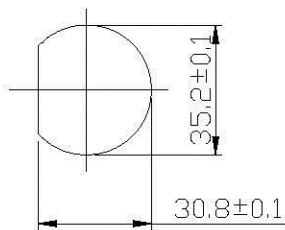
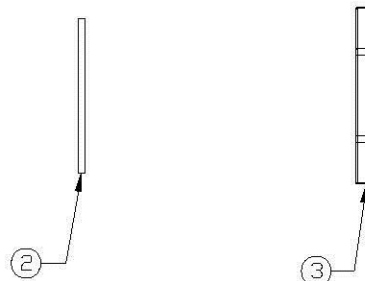
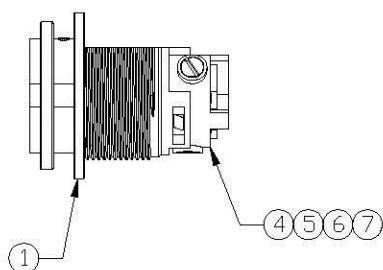
4

Notes: (Unless Otherwise Specified)

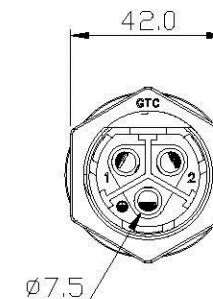
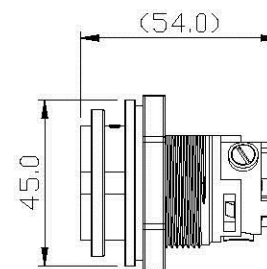
- 1. Waterproof Rate: IP67.
- 2. Recommend Panel Thickness: 0.8 to 6.0 mm.
- 3. Recommend Hex Nut Torque: 9~10 Kgf-cm.
- 4. RoHS Compliant.

REV	ECN#	DESCRIPTION OF REVISION	DRAW BY DATE	CHECK BY DATE	APPROVE BY DATE
A0	ECN-130105	Mass Production	Lucas 01/10/13	Ray 01/10/13	Ray 01/10/13

**GTC**  
**DOC.CENTER.ISSUE**  
**JAN.15.2013**  
**ONLY FOR**  
**RELEASE**



Recommend  
Panel Cut-Out



7	Machine Screw	S15C Finish: Ni Plated	3
6	Fixed lid Female 3P	Thermoplastic Color: Black	1
5	Terminal	Copper Alloy Finish: Sn Plated	3
4	Contacts	Copper Alloy Finish: Ni Plated	3
3	Hex Nut	Thermoplastic Color: Black	1
2	Gasket	Silicone Color: Black	1
1	Housing	Thermoplastic Color: Black	1
Item	Part Name	Material / Finish	Qty

TITLE						DRAWING NUMBER			REV.
Power M35 41A 3P Field Installable Panel Female Screw-in Push Lock						GT1E1400-42030			A0

THIRD ANGLE PROJECTION	SIZE	SCALE	DRAW / DATE	CHECK / DATE	APPROVE / DATE	TOLERANCES	UNIT	SHEET
	B	1:1	Lucas 06/14/12	Ray 06/14/12	Ray 06/14/12	X.X ± 0.5 X.XX ± 0.2	mm	1/1

**All Connectors**

www.allconnectors.de  
 Tel: 0519 711 200500  
 20721 Hildesheim - Germany

info@allconnectors.de  
 Fax: 0519 711 200950  
 kettemer@t.az

THE INFORMATION CONTAINED HEREIN IS THE PROPRIETARY PROPERTY OF GT CONTACT CO., LTD. THE POSSESSOR AGREES TO THE FOLLOWING:  
 (A) TO MAINTAIN THIS DOCUMENT IN CONFIDENCE  
 (B) NOT TO REPRODUCE OR COPY IT  
 (C) NOT TO REVEAL OR PUBLISH IT IN WHOLE OR PART  
 (D) ALL RIGHTS RESERVED

1

2

3

4